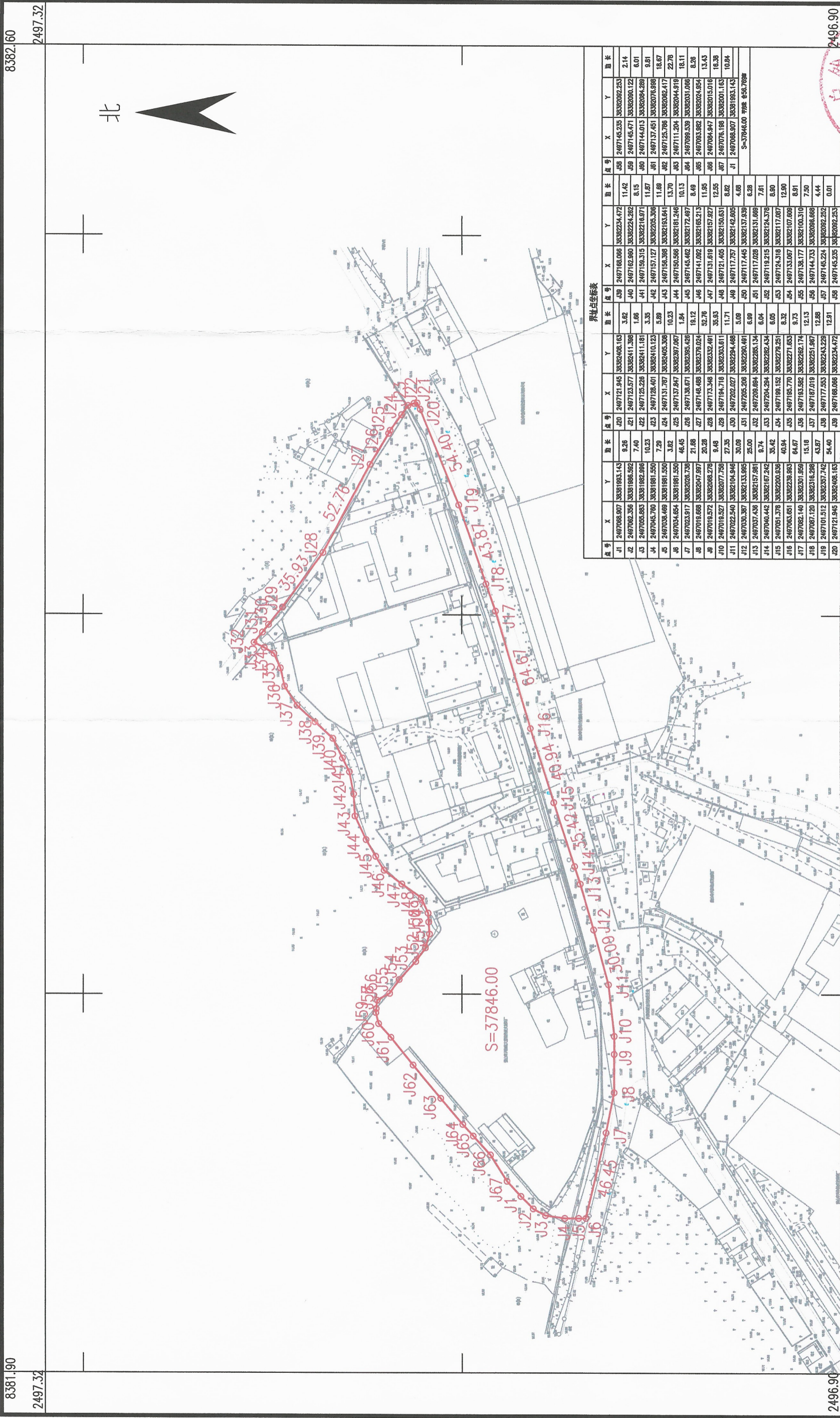


鹤山市2021年第十批次城镇建设用地的勘测定界图 (GH20653)

鹤山市共和镇新连村委会

单位: m.m²



界址点坐标表

序号	X	Y	长度	序号	X	Y	长度	序号	X	Y	长度
J1	2497088.07	38391983.143	9.26	J20	2497121.945	38392408.163	3.62	J39	2497188.086	38392234.472	11.42
J2	2497082.355	38391888.592	7.40	J21	2497123.577	38392411.398	1.65	J40	2497182.980	38392224.282	8.15
J3	2497055.883	38391882.896	10.23	J22	2497125.228	38392411.161	3.35	J41	2497159.315	38392216.971	11.67
J4	2497045.760	38391881.550	7.29	J23	2497128.401	38392410.123	5.89	J42	2497157.127	38392205.308	11.69
J5	2497038.468	38391881.550	3.82	J24	2497131.787	38392405.308	10.23	J43	2497158.398	38392193.844	13.70
J6	2497034.654	38391881.550	48.45	J25	2497137.877	38392395.428	1.84	J44	2497150.986	38392181.248	10.13
J7	2497023.917	38392028.729	21.68	J26	2497138.671	38392387.087	16.12	J45	2497145.482	38392172.487	8.48
J8	2497018.668	38392047.397	20.28	J27	2497148.488	38392378.024	32.76	J46	2497131.619	38392165.213	11.95
J9	2497016.572	38392068.278	9.48	J28	2497173.348	38392332.461	35.83	J47	2497141.892	38392152.827	12.55
J10	2497018.527	38392077.729	27.35	J29	2497184.716	38392303.611	11.71	J48	2497121.485	38392140.651	8.62
J11	2497022.540	38392104.348	30.08	J30	2497202.027	38392294.468	5.69	J49	2497117.757	38392142.805	4.68
J12	2497030.387	38392133.985	25.00	J31	2497205.206	38392290.491	6.89	J50	2497117.448	38392137.839	6.28
J13	2497037.438	38392157.981	9.74	J32	2497208.684	38392285.134	6.04	J51	2497117.028	38392131.689	7.61
J14	2497040.443	38392187.242	35.42	J33	2497204.284	38392282.434	6.05	J52	2497119.215	38392124.378	8.90
J15	2497051.378	38392200.838	40.84	J34	2497199.182	38392279.251	8.32	J53	2497124.318	38392117.087	12.80
J16	2497063.651	38392228.983	15.18	J35	2497185.770	38392271.653	9.73	J54	2497133.067	38392107.808	6.91
J17	2497082.140	38392301.859	43.87	J36	2497183.582	38392262.174	12.13	J55	2497138.177	38392100.310	7.50
J18	2497087.120	38392316.298	54.40	J37	2497187.019	38392251.887	12.88	J56	2497144.733	38392096.688	4.44
J19	2497101.512	38392325.742	54.40	J38	2497187.019	38392243.229	12.81	J57	2497145.224	38392092.252	0.01
J20	2497121.945	38392408.163	94.40	J39	2497188.086	38392234.472	12.81	J58	2497145.235	38392082.253	0.01

1:2000

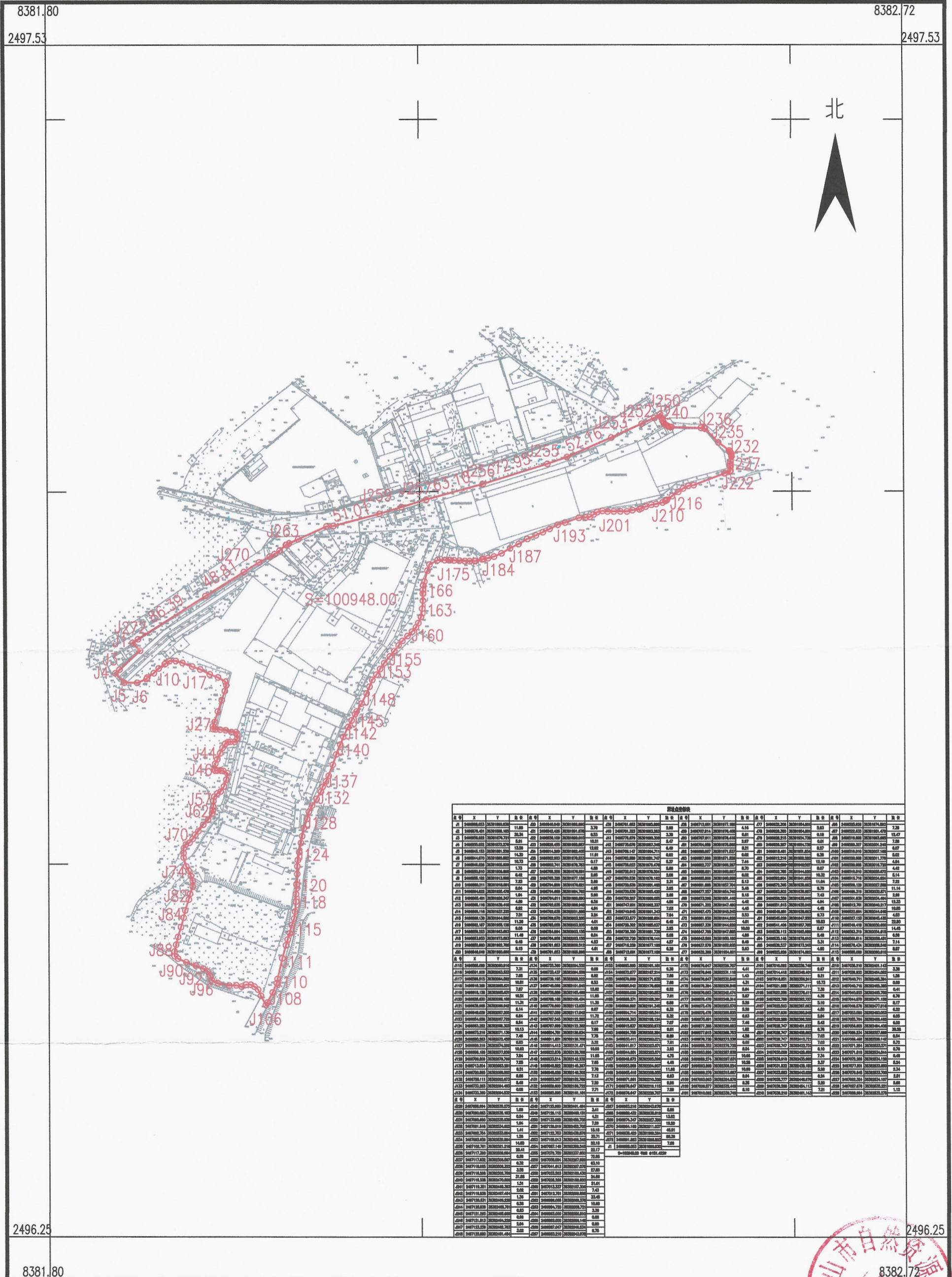
2021年10月数字化制图
 2000国家大地坐标系 铁绘有限公司
 1985国家高程基准 等高距为1米
 2007年版本
 证书编号:乙测资字44500859



鹤山市2021年第十批次城镇建设用地图勘测定界图 (GH20654)

鹤山市共和镇新连村委会

单位: m.m²



点号	X	Y	点号	X	Y	点号	X	Y	点号	X	Y	点号	X	Y	点号	X	Y			
J1	8381.80	2496.25	J2	8381.85	2496.25	J3	8381.90	2496.25	J4	8381.95	2496.25	J5	8382.00	2496.25	J6	8382.05	2496.25			
J7	8382.10	2496.25	J8	8382.15	2496.25	J9	8382.20	2496.25	J10	8382.25	2496.25	J11	8382.30	2496.25	J12	8382.35	2496.25	J13	8382.40	2496.25
J14	8382.45	2496.25	J15	8382.50	2496.25	J16	8382.55	2496.25	J17	8382.60	2496.25	J18	8382.65	2496.25	J19	8382.70	2496.25	J20	8382.72	2496.25
J21	8382.72	2496.25	J22	8382.72	2496.30	J23	8382.72	2496.35	J24	8382.72	2496.40	J25	8382.72	2496.45	J26	8382.72	2496.50	J27	8382.72	2496.53
J28	8382.72	2496.53	J29	8382.72	2496.53	J30	8382.72	2496.53	J31	8382.72	2496.53	J32	8382.72	2496.53	J33	8382.72	2496.53	J34	8382.72	2496.53
J35	8382.72	2496.53	J36	8382.72	2496.53	J37	8382.72	2496.53	J38	8382.72	2496.53	J39	8382.72	2496.53	J40	8382.72	2496.53	J41	8382.72	2496.53
J42	8382.72	2496.53	J43	8382.72	2496.53	J44	8382.72	2496.53	J45	8382.72	2496.53	J46	8382.72	2496.53	J47	8382.72	2496.53	J48	8382.72	2496.53
J49	8382.72	2496.53	J50	8382.72	2496.53	J51	8382.72	2496.53	J52	8382.72	2496.53	J53	8382.72	2496.53	J54	8382.72	2496.53	J55	8382.72	2496.53
J56	8382.72	2496.53	J57	8382.72	2496.53	J58	8382.72	2496.53	J59	8382.72	2496.53	J60	8382.72	2496.53	J61	8382.72	2496.53	J62	8382.72	2496.53
J63	8382.72	2496.53	J64	8382.72	2496.53	J65	8382.72	2496.53	J66	8382.72	2496.53	J67	8382.72	2496.53	J68	8382.72	2496.53	J69	8382.72	2496.53
J70	8382.72	2496.53	J71	8382.72	2496.53	J72	8382.72	2496.53	J73	8382.72	2496.53	J74	8382.72	2496.53	J75	8382.72	2496.53	J76	8382.72	2496.53
J77	8382.72	2496.53	J78	8382.72	2496.53	J79	8382.72	2496.53	J80	8382.72	2496.53	J81	8382.72	2496.53	J82	8382.72	2496.53	J83	8382.72	2496.53
J84	8382.72	2496.53	J85	8382.72	2496.53	J86	8382.72	2496.53	J87	8382.72	2496.53	J88	8382.72	2496.53	J89	8382.72	2496.53	J90	8382.72	2496.53
J91	8382.72	2496.53	J92	8382.72	2496.53	J93	8382.72	2496.53	J94	8382.72	2496.53	J95	8382.72	2496.53	J96	8382.72	2496.53	J97	8382.72	2496.53
J98	8382.72	2496.53	J99	8382.72	2496.53	J100	8382.72	2496.53	J101	8382.72	2496.53	J102	8382.72	2496.53	J103	8382.72	2496.53	J104	8382.72	2496.53
J105	8382.72	2496.53	J106	8382.72	2496.53															

鹤山市山水测绘有限公司

2021年10月数字化制图
 2000国家大地坐标系, 中央子午线114度
 1985国家高程基准, 等高距为1米
 2007年版式
鹤山市山水测绘有限公司
出图专用章
 证书编号: 乙测资字44500859

1:4000

鹤山市自然资源局
 绘图员: 龚翔
 检查员: 周军
 审核员: 周泳锋