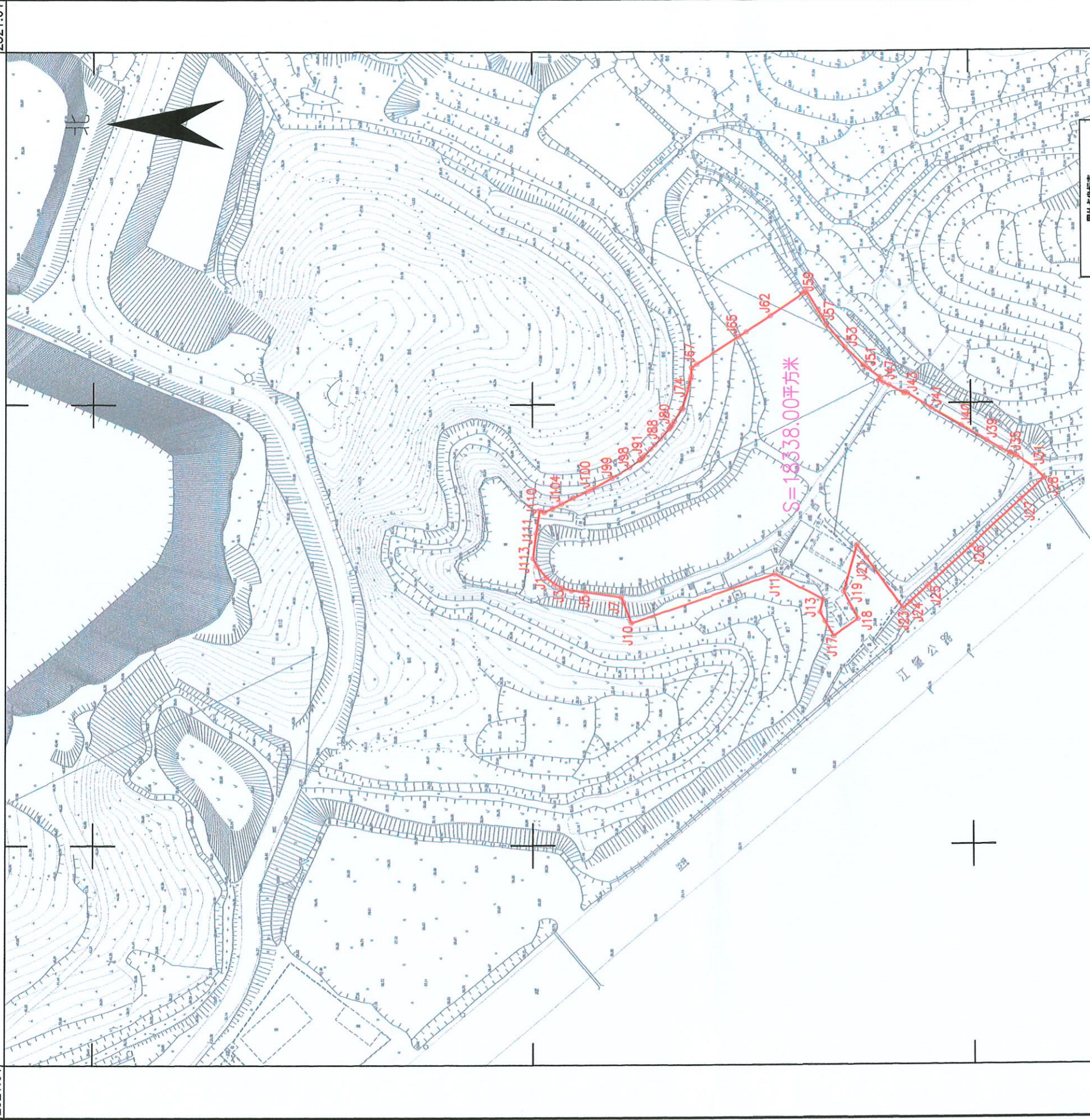


鹤山市2022年度第二十六批次(增减挂钩)城镇建设用地的勘测定界图(LK319)

鹤山市龙口镇三凤村八字第一股份、八字第二股份经济合作社、三凤股份经济合作联社

单位: m.m²

38384.10 2521.64 38384.56 2521.64



界址点坐标表			界址点坐标表			界址点坐标表			界址点坐标表			界址点坐标表		
点号	X	Y	点号	X	Y	点号	X	Y	点号	X	Y	点号	X	Y
J1	2521383.770	38384321.403	J20	2521252.347	38384335.989	J39	2521182.840	38384442.214	J58	2521288.264	38384451.006	J77	2521331.635	38384381.147
J2	2521380.120	38384318.546	J21	2521252.338	38384335.957	J40	2521204.678	38384389.892	J39	2521288.264	38384451.006	J78	2521332.038	38384387.486
J3	2521386.827	38384316.800	J22	2521249.090	38384330.010	J41	2521216.152	38384397.743	J40	2521204.678	38384451.006	J79	2521332.064	38384387.456
J4	2521382.341	38384315.371	J23	2521231.463	38384336.749	J42	2521228.917	38384404.443	J41	2521216.152	38384442.214	J80	2521335.213	38384382.380
J5	2521375.891	38384314.882	J24	2521228.295	38384339.715	J43	2521225.015	38384404.462	J42	2521228.917	38384442.214	J81	2521335.278	38384382.285
J6	2521369.840	38384312.514	J25	2521220.089	38384337.185	J44	2521220.954	38384404.490	J43	2521225.015	38384442.214	J82	2521336.240	38384384.726
J7	2521359.638	38384312.504	J26	2521201.091	38384335.285	J45	2521202.521	38384404.343	J44	2521220.954	38384442.214	J83	2521337.161	38384384.105
J8	2521358.630	38384310.135	J27	2521177.583	38384335.872	J46	2521202.217	38384404.322	J45	2521202.521	38384442.214	J84	2521337.489	38384384.272
J9	2521358.714	38384310.135	J28	2521166.825	38384335.865	J47	2521202.804	38384404.344	J46	2521202.217	38384442.214	J85	2521340.149	38384384.821
J10	2521355.031	38384310.668	J29	2521166.751	38384335.728	J48	2521201.981	38384410.518	J47	2521202.804	38384442.214	J86	2521341.185	38384384.830
J11	2521288.780	38384311.094	J30	2521177.585	38384335.872	J49	2521201.983	38384410.518	J48	2521201.981	38384442.214	J87	2521341.185	38384384.830
J12	2521287.883	38384311.094	J31	2521177.585	38384335.872	J50	2521201.983	38384410.518	J49	2521201.983	38384442.214	J88	2521341.185	38384384.830
J13	2521287.872	38384311.075	J32	2521177.585	38384335.872	J51	2521201.983	38384410.518	J50	2521201.983	38384442.214	J89	2521341.185	38384384.830
J14	2521286.301	38384310.327	J33	2521177.585	38384335.872	J52	2521201.983	38384410.518	J51	2521201.983	38384442.214	J90	2521341.185	38384384.830
J15	2521286.339	38384310.327	J34	2521177.585	38384335.872	J53	2521201.983	38384410.518	J52	2521201.983	38384442.214	J91	2521341.185	38384384.830
J16	2521286.331	38384310.327	J35	2521177.585	38384335.872	J54	2521201.983	38384410.518	J53	2521201.983	38384442.214	J92	2521341.185	38384384.830
J17	2521283.066	38384294.476	J36	2521177.585	38384335.872	J55	2521201.983	38384410.518	J54	2521201.983	38384442.214	J93	2521341.185	38384384.830
J18	2521282.082	38384302.365	J37	2521177.585	38384335.872	J56	2521201.983	38384410.518	J55	2521201.983	38384442.214	J94	2521341.185	38384384.830
J19	2521282.432	38384314.538	J38	2521177.585	38384335.872	J57	2521201.983	38384410.518	J56	2521201.983	38384442.214	J95	2521341.185	38384384.830
J20	2521282.347	38384335.989	J39	2521177.585	38384335.872	J58	2521201.983	38384410.518	J57	2521201.983	38384442.214	J96	2521341.185	38384384.830



2022年9月数字地形图
2000国家大地坐标系: 中大1954高程基准
1985国家高程基准, 等高距为1米
证书编号: 乙测资字44500859

1:2000

38384.10

鹤山市山水测绘有限公司

鹤山市2022年度第二十六批次(增减挂钩)城镇建设用地的测定界图(LK318)

鹤山市龙口镇三凤村凤巢第一股份、凤巢第二股份经济合作社、凤巢联队股份经济合作社

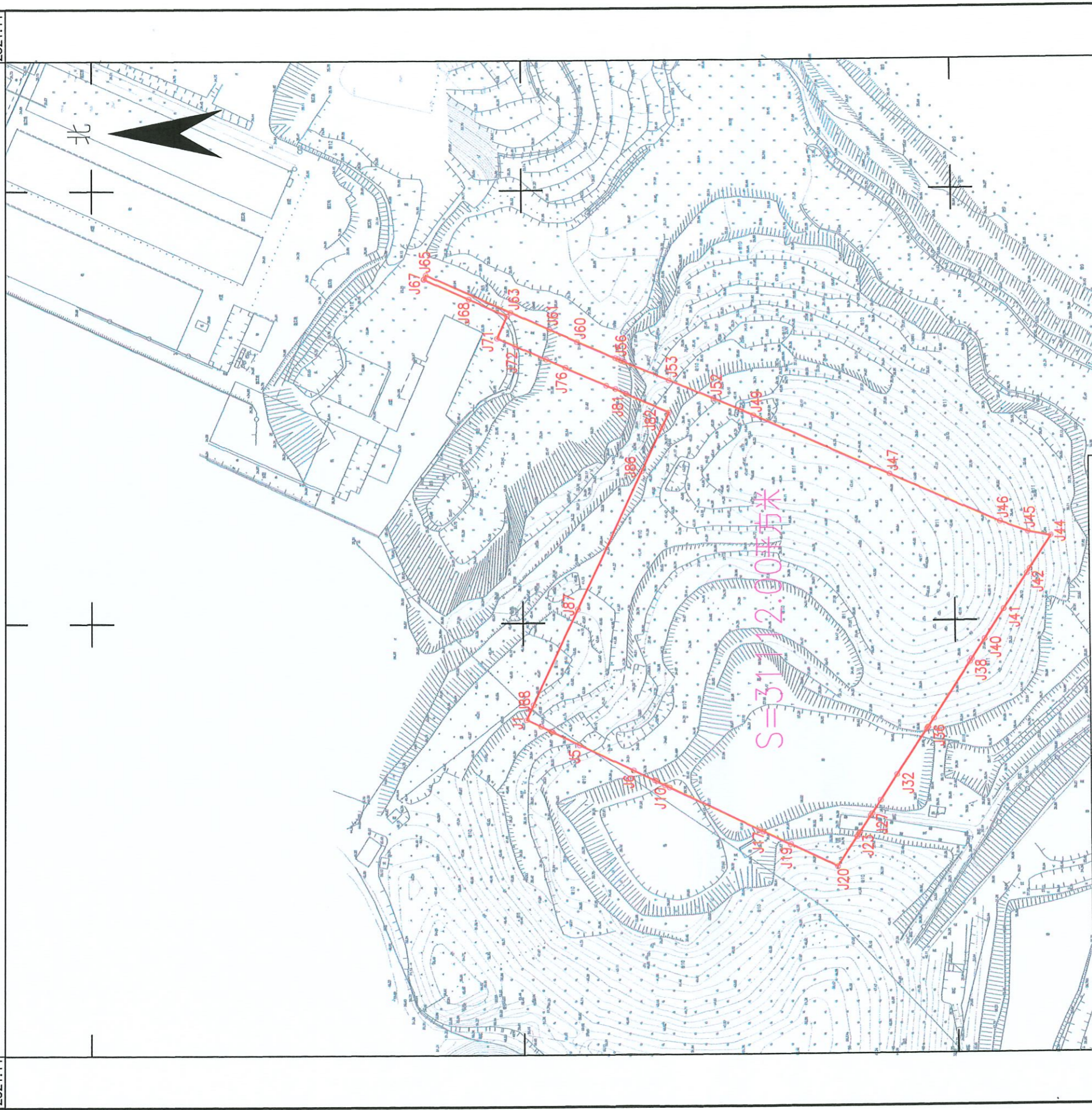
单位: m.m²

38383.40

2521.44

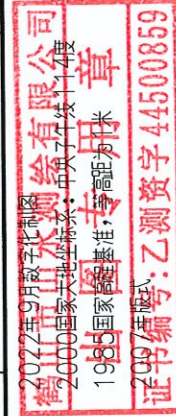
38383.86

2521.44



界址点坐标表				界址点坐标表				界址点坐标表							
点号	X	Y	面积	点号	X	Y	面积	点号	X	Y	面积	点号	X	Y	面积
J1	2521198.532	38383555.191	7.50	J20	2521055.048	38383468.577	16.48	J39	2520982.412	38383581.903	11.02	J59	2521156.888	38383722.189	0.01
J2	2521187.785	38383551.885	5.00	J21	2521046.001	38383500.347	0.05	J40	2520986.363	38383591.189	16.29	J60	2521156.880	38383722.186	18.25
J3	2521187.253	38383549.787	0.75	J22	2521045.876	38383500.386	0.01	J41	2520977.415	38383604.726	19.97	J61	2521174.288	38383729.985	14.00
J4	2521186.575	38383549.473	13.88	J23	2521045.971	38383500.371	1.30	J42	2520966.449	38383621.416	19.97	J62	2521187.080	38383735.622	0.01
J5	2521174.053	38383543.665	27.82	J24	2521045.258	38383501.075	0.51	J43	2520965.126	38383623.430	18.07	J63	2521205.180	38383743.615	0.01
J6	2521138.888	38383538.912	10.78	J25	2521045.253	38383501.484	1.08	J44	2520965.203	38383626.531	10.77	J64	2521205.186	38383743.618	43.02
J7	2521138.888	38383538.912	10.78	J26	2521044.883	38383502.383	9.14	J45	2520964.592	38383640.592	13.70	J65	2521244.539	38383761.005	2.03
J8	2521138.888	38383538.912	10.78	J27	2521038.642	38383503.025	1.22	J46	2520978.687	38383646.181	55.81	J66	2521245.351	38383762.141	0.22
J9	2521138.888	38383538.912	10.78	J28	2521038.874	38383503.666	0.01	J47	2521026.548	38383662.624	68.91	J67	2521245.441	38383762.803	5.40
J10	2521138.888	38383538.912	10.78	J29	2521038.886	38383504.104	7.07	J48	2521026.548	38383662.624	6.25	J68	2521244.531	38383762.803	19.25
J11	2521132.728	38383532.728	45.88	J30	2521035.068	38383506.950	0.01	J49	2521026.548	38383662.624	13.76	J69	2521206.354	38383741.859	0.01
J12	2521132.728	38383532.728	45.88	J31	2521035.078	38383507.696	14.05	J50	2521026.548	38383662.624	0.02	J70	2521206.349	38383741.859	11.14
J13	2521132.728	38383532.728	45.88	J32	2521027.365	38383508.706	25.12	J51	2521111.033	38383703.282	22.59	J71	2521211.481	38383731.853	9.21
J14	2521091.211	38383503.877	2.07	J33	2521027.365	38383509.467	0.80	J52	2521111.048	38383703.282	22.32	J72	2521203.040	38383728.003	0.01
J15	2521091.211	38383503.877	2.07	J34	2521012.830	38383510.025	0.36	J53	2521152.570	38383704.410	1.48	J73	2521144.760	38383688.726	70.14
J16	2521098.247	38383502.878	0.02	J35	2521012.830	38383510.025	0.01	J54	2521152.570	38383704.410	1.48	J74	2521188.919	38383721.723	0.01
J17	2521098.247	38383502.878	0.04	J36	2521012.830	38383510.025	4.88	J55	2521152.570	38383704.410	1.48	J75	2521188.919	38383721.723	9.77
J18	2521098.247	38383502.878	14.08	J37	2521012.830	38383510.025	30.87	J56	2521152.570	38383704.410	1.48	J76	2521188.919	38383721.723	20.30
J19	2521078.590	38383488.878	23.88	J38	2520983.286	38383520.570	1.80	J57	2521152.570	38383704.410	1.35	J77	2521188.919	38383721.723	18.77
J20	2521055.048	38383468.577	16.48	J39	2520982.412	38383581.903	11.02	J58	2521152.570	38383704.410	1.35	J78	2521188.919	38383721.723	18.77

S=31112.00平方米



1:2000